

# INSECTS IN THE GARDEN & AROUND YOUR HOME

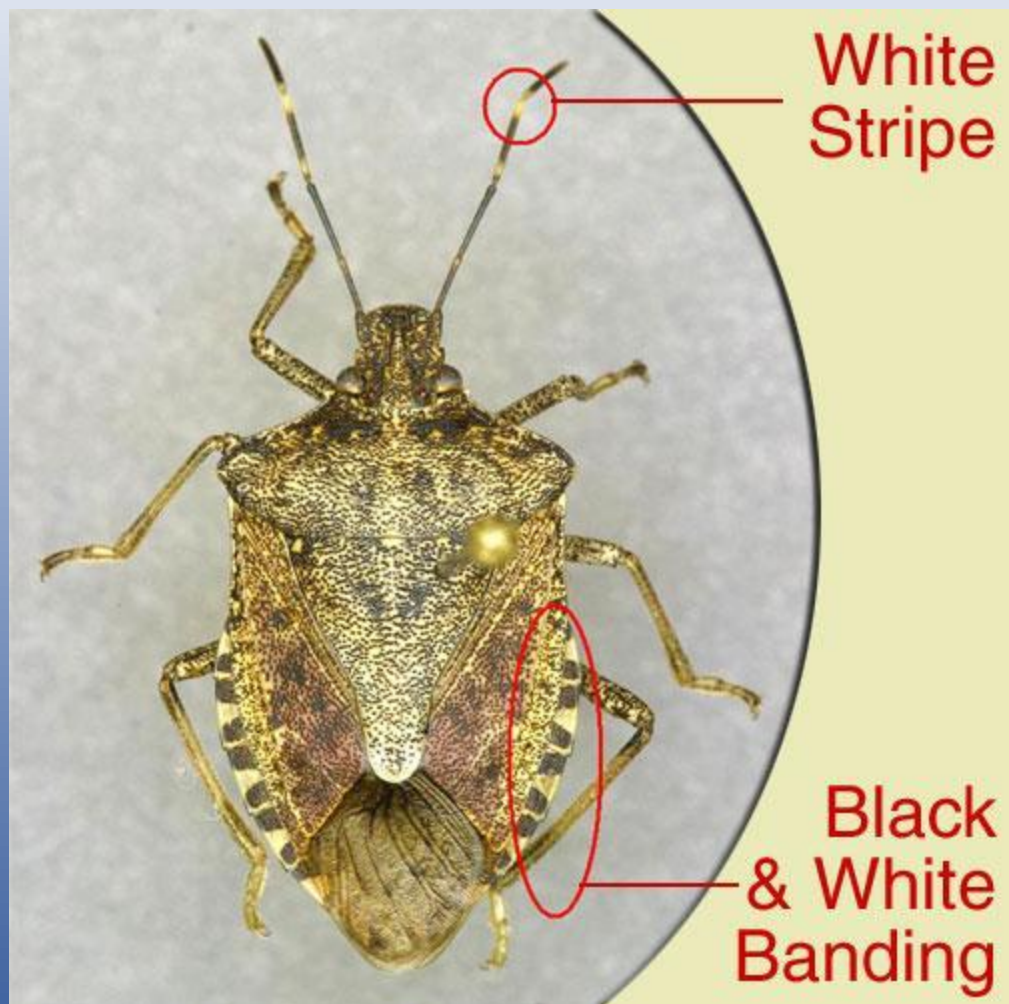


<https://entomology.ca.uky.edu/ef652>

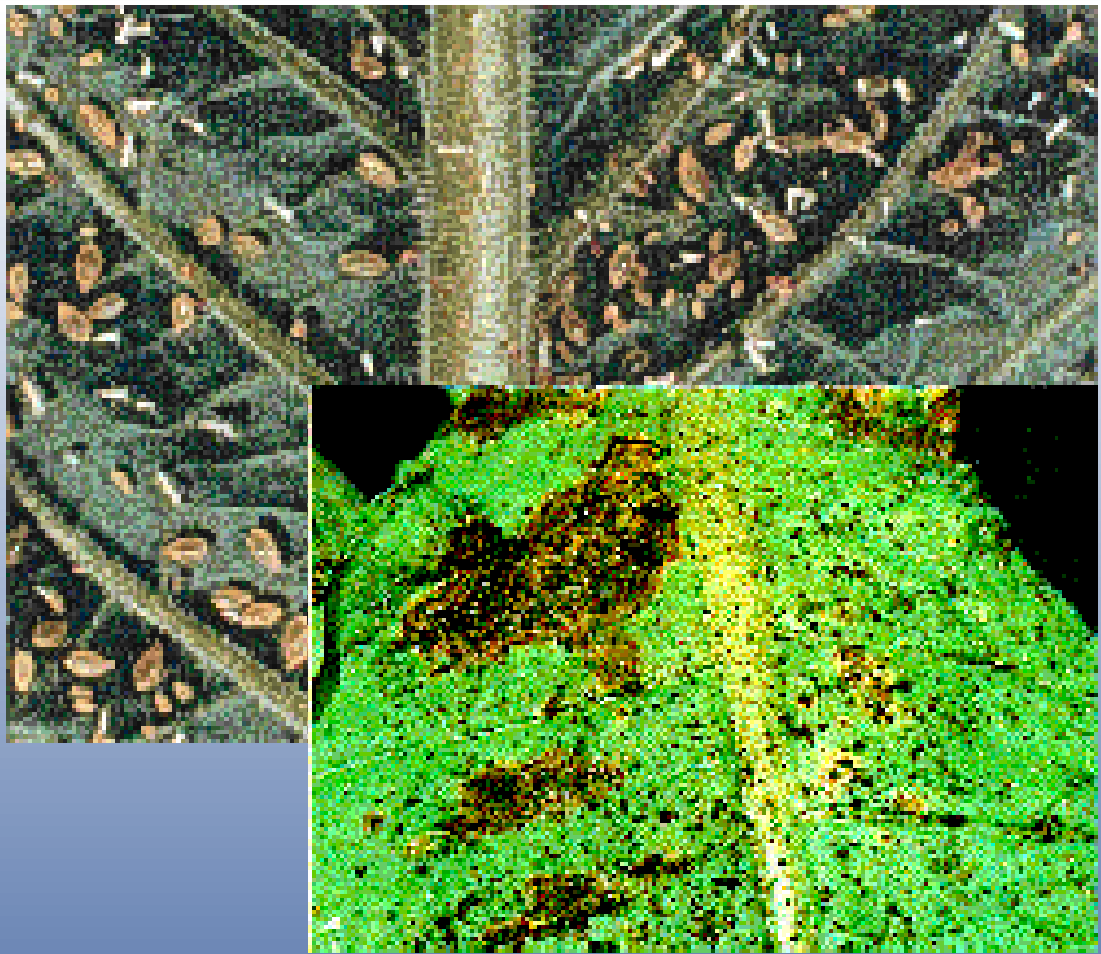


<https://entomology.ca.uky.edu/ef440>





<https://entomology.ca.uky.edu/entfact/brown-marmorated-stink-bug-bmsb-kentucky>



<https://entomology.ca.uky.edu/ef103>



## Japanese Beetle



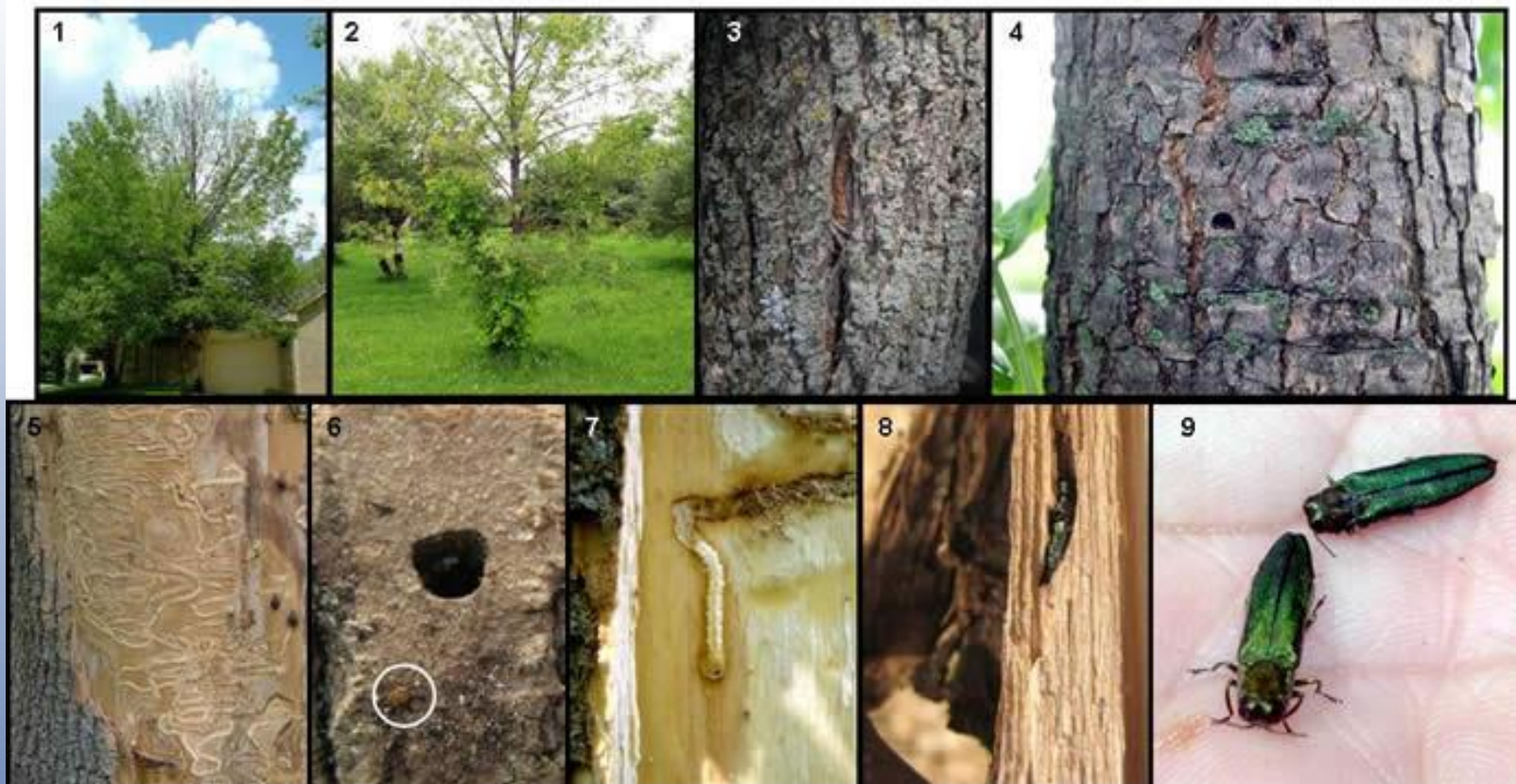


<https://entomology.ca.uky.edu/ent10>



<https://entomology.ca.uky.edu/entfact/kentucky-emerald-ash-borer-eab-resources-updates>

## SYMPTOMS AND SIGNS OF EMERALD ASH BORER



1. Crown decline from the top down, 2. Epicormic shoots, 3. Bark split, 4. D-shaped exit hole, 5. S-shaped galleries, 6. Egg (circled) and exit hole, 7. Larva, 8. Adult in pupal cell, 9. Adults

**If you think you have found emerald ash borer or its damage on ash, please call or e-mail:**

Maine Forest Service - Forest Health and Monitoring - (207) 287-2431, [forestinfo@maine.gov](mailto:forestinfo@maine.gov)

[www.maineforestservice.gov/InvasiveThreats.htm](http://www.maineforestservice.gov/InvasiveThreats.htm)



Photo Credits: 1: Michigan Department of Agriculture, Pesticide and Plant Pest Management; 2,3,4,7,9: Maine Department of Agriculture, Plant Industry; 5,8: Maine Department of Conservation, Forest Service

# EAB Infested Counties

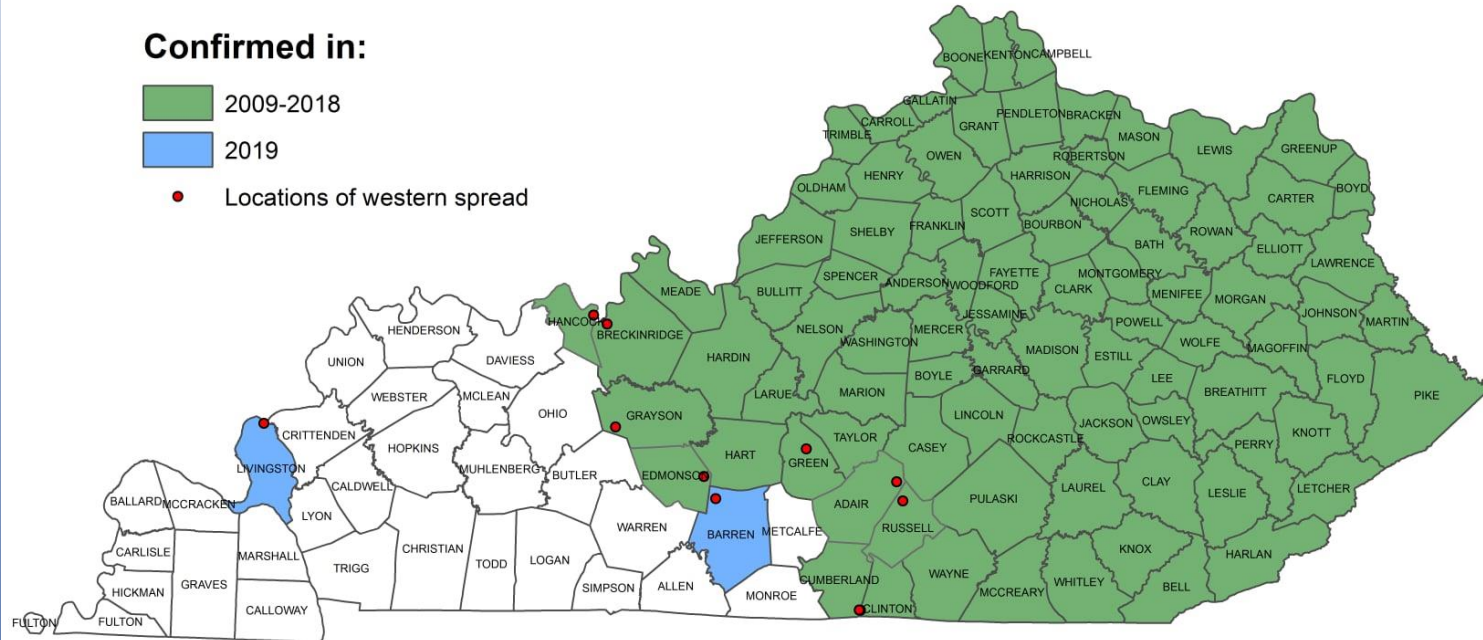


## Confirmed in:

2009-2018

2019

• Locations of western spread



Last updated: September 17, 2019







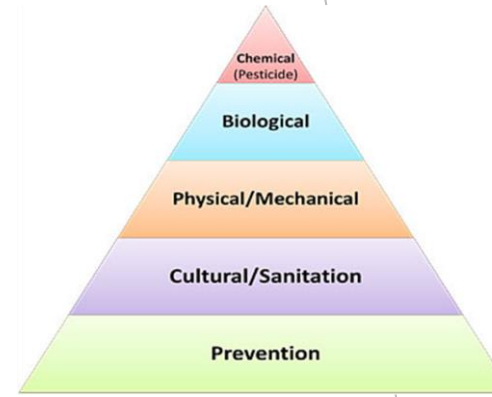
# Beneficial Insects





# The Integrated Pest Management Process

- Maintain garden hygiene
- Rotate crops
- Build soil health
- Use pest- and disease-resistant varieties
- Learn pest emergence times and habits
- Use interplanting and companion planting
- Use biological controls
- Use physical controls
- Use natural sprays
- Use botanicals




Popular Topics

- > Animal Health
- > Animal Welfare
- > Biotechnology
- > Emergency Response
- > Imports & Exports
- > International Services
- > Pests & Diseases
- > Plant Health
- > Wildlife Damage

**ENTOMOLOGY**  
at the University of Kentucky

Home Insect & Pest Info Research Extension Academic Programs 4-H Entomology IPM People News









1 2 3 4 5 6 7 8 Pause

**Carpet Beetle Larva**

Carpet beetles are commonly encountered indoors during cold months in Kentucky.

**Social Entomology**

[Kentucky Pest News \(KPN\)](#)   
[Kentucky Bugs](#)   
[UK Entomology Club](#)     
[Office of the State Entomologist](#) 

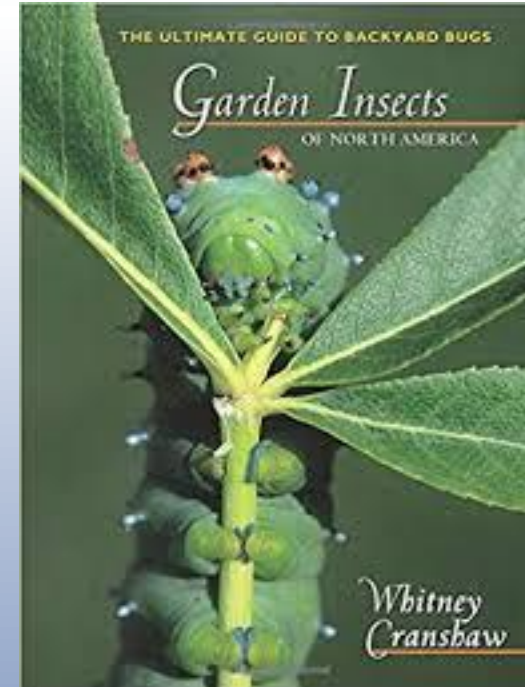
**Identification & Management Assistance**

For assistance with insect identification and management in Kentucky, bring questions and specimens directly to your local County Extension Office. Your local office can also help you find and print factsheets and other information. These services are provided to Kentuckians at no cost.

[List of Kentucky County Extension Offices](#)

Residents of states outside of Kentucky should contact their local or regional...

**Entomology News**



**Kentucky Pest News**  
Entomology • Plant Pathology • Weed Science

Home About Contacts

**A Grower's Guide to Kentucky Hemp Production – Webinar**

Posted on April 28, 2020

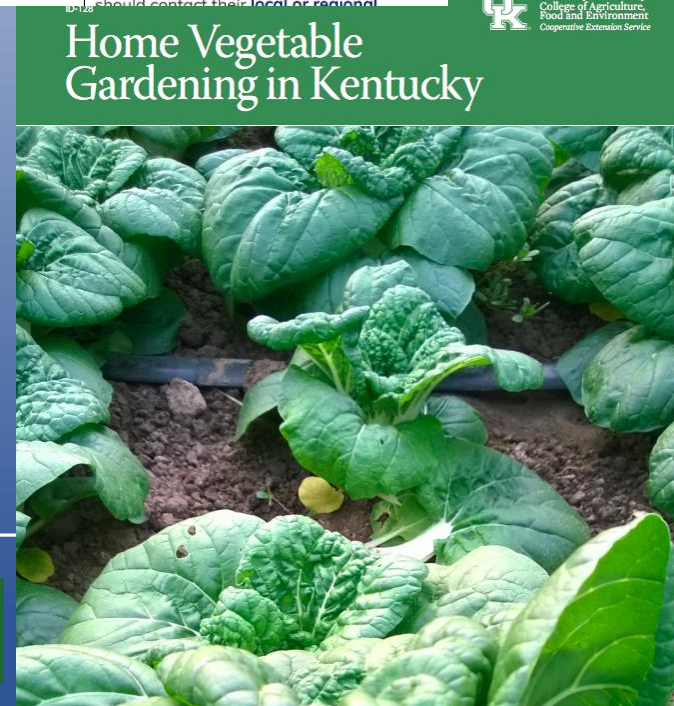
Unfortunately, last month's hemp production workshops were cancelled as a result of COVID-19. In efforts to bring the program to hemp growers across the state, UK hemp specialists will offer a revised format by Zoom on Tuesday May 5 from ...

[Read more](#)

**Search**

search here ... **Go**

[Subscribe to KPN](#)



# SHORT-TOOTH MOUNTAIN MINT

*PYCNANTHEMUM MUTICUM*

- Up to 3' tall.
- Full sun-part shade.
- Fragrant foliage.
- Spreads by rhizome. Vigorous grower.
- Attracts bees, butterflies, moths





[sarah.stolz@uky.edu](mailto:sarah.stolz@uky.edu)

859.572.2600

Thanks

Happy Gardening

