



# Gardening for Butterflies in Kentucky

PRESENTED BY:

AMY ALDENDERFER

COUNTY EXTENSION AGENT FOR HORTICULTURE



# Life Cycle of a Butterfly





# Hatching







©David L. Wagner and Valerie Giles  
Twin-spotted Sphinx



©Bob Wilson  
Last 2 instars



©David L. Wagner and Valerie Giles  
First 3 instars  
Spicebush Swallowtail



©David L. Wagner and Valerie Giles  
Silver-spotted Skipper



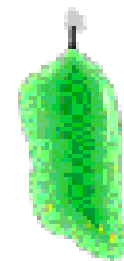
©David L. Wagner and Valerie Giles  
Yellow-based Tussock Moth



©David L. Wagner and Valerie Giles  
Saddleback Caterpillar



©David L. Wagner and Valerie Giles  
Woolly Bear

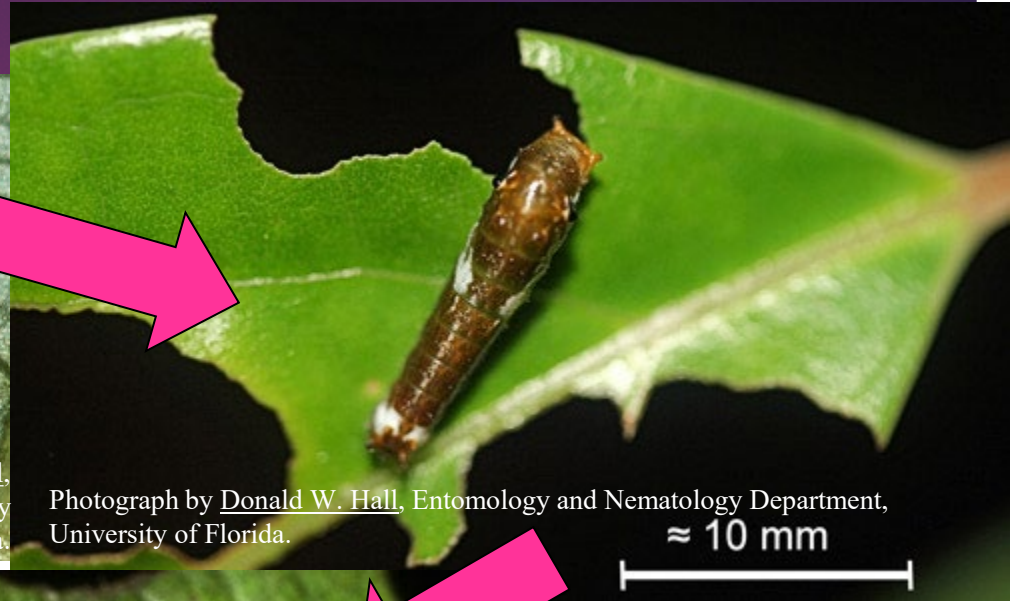


# Feeding



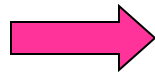


# Molting





# Chrysalis Pupating (Resting Stage)

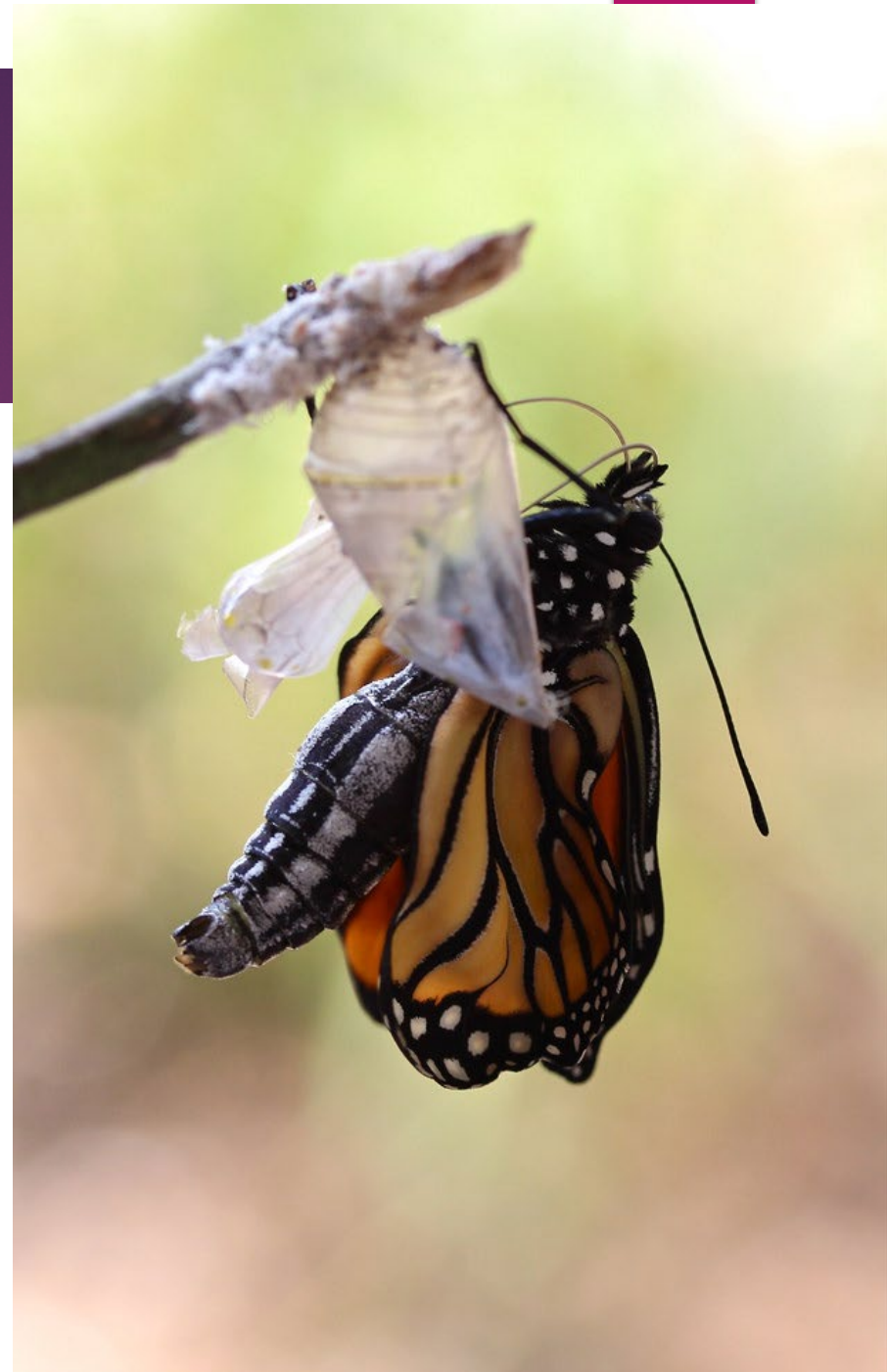
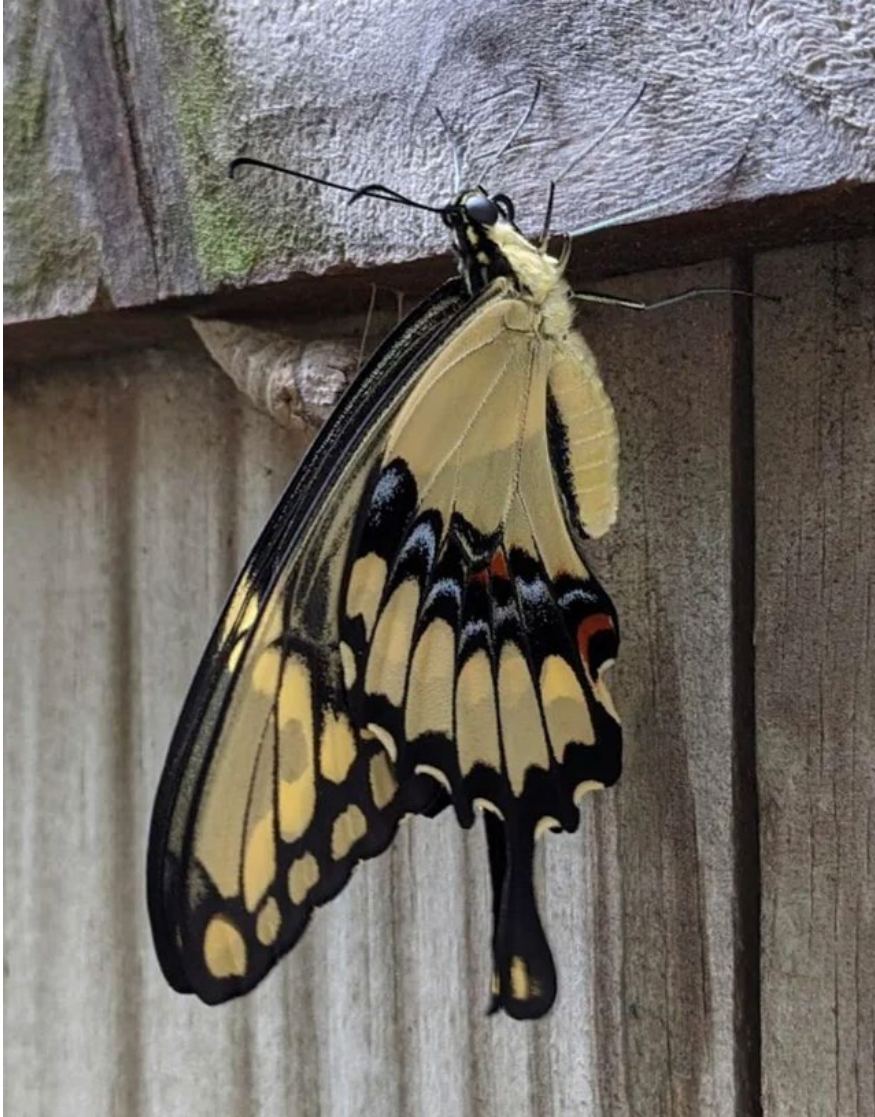


# Chrysalis



Photographs by Donald W. Hall,  
Entomology and Nematology  
Department,  
University of Florida.

# Emergence





# Mating



# Landscaping Principles

- ▶ Minimize lawn
- ▶ Plant densely for greatest food and cover value
- ▶ Use feeders and nest boxes to supplement natural food and cover
- ▶ Use native plant communities as your landscape models
- ▶ Strive for vegetational diversity





# Flowers All Season





# Avoid Modern Hybrids





# Salt Licks



March 2012

# Reduce Pesticides





# Include Larval Host Plants



<https://entomology.ca.uky.edu/ef006>





# Turn your Lawn into a Meadow







# Spice Up the Lawn





# Other Food Sources





# Cover

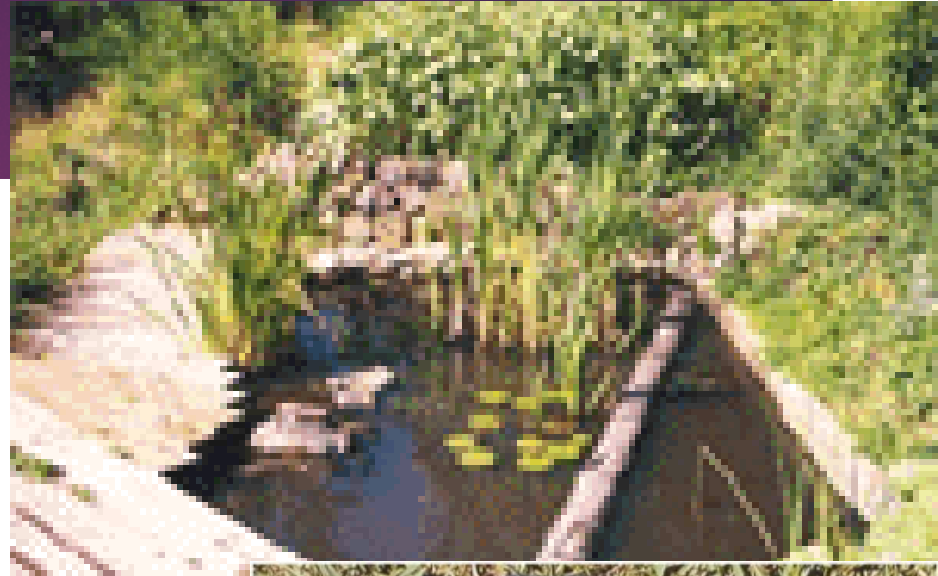
- ▶ Plants
- ▶ Natural Cavities
- ▶ Artificial Nesting Boxes





# Water

- ▶ Natural waterways
- ▶ Baths
- ▶ Ponds





# Butterfly Garden Plan



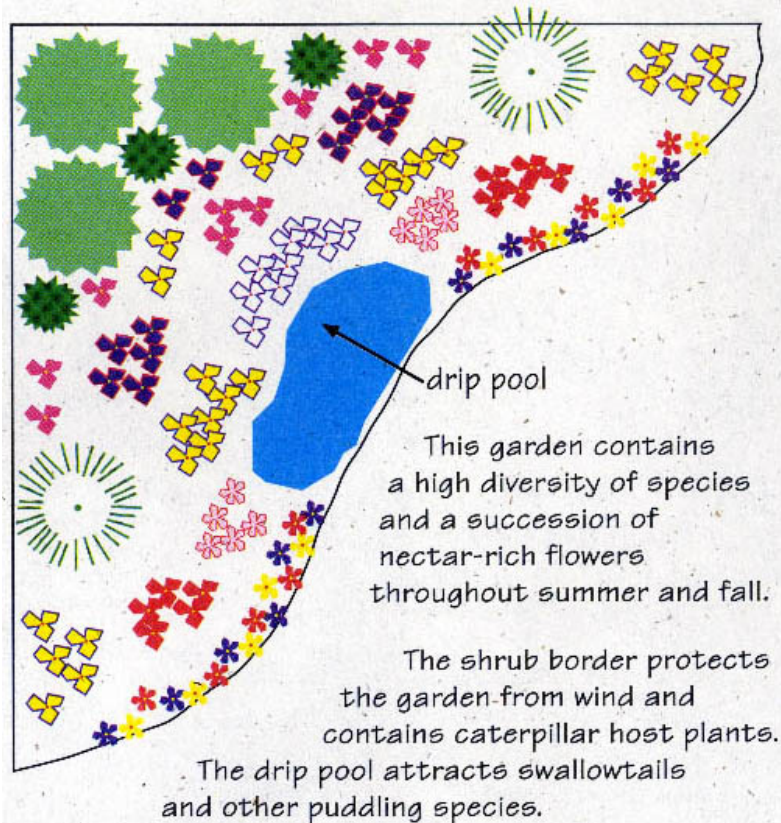
- ▶ Food
- ▶ Cover
- ▶ Water
- ▶ Basking
- ▶ Visibility



# Sample Plans

## BUTTERFLY GARDEN

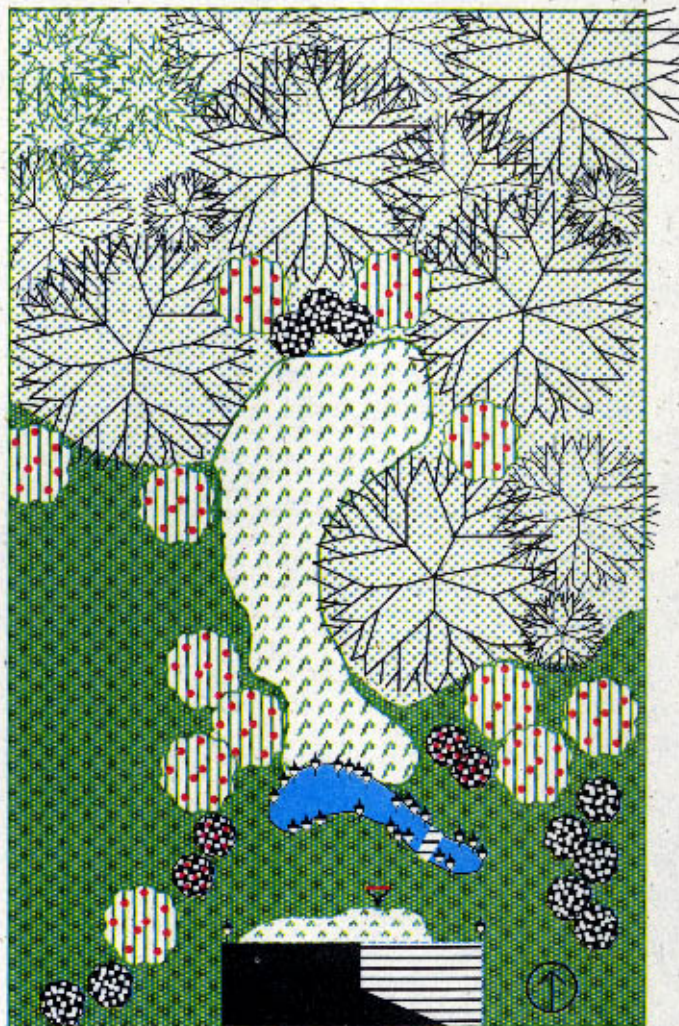
12 ft. x 12 ft. Full sun, average soil



### Plant Key

- lg. shrub
- sm. shrub
- native grass
- New England aster
- blazing star
- lanceleaf coreopsis
- sunflower
- goldenrod
- black-eyed susan
- purple cornflower
- garden phlox
- mountain mint
- downy phlox
- butterfly milkweed
- annuals





Dimensions: 80' X 130'  
Scale: 1" = 24'

## BACKYARD HABITAT - SAMPLE PLAN



# What should your Garden look like?







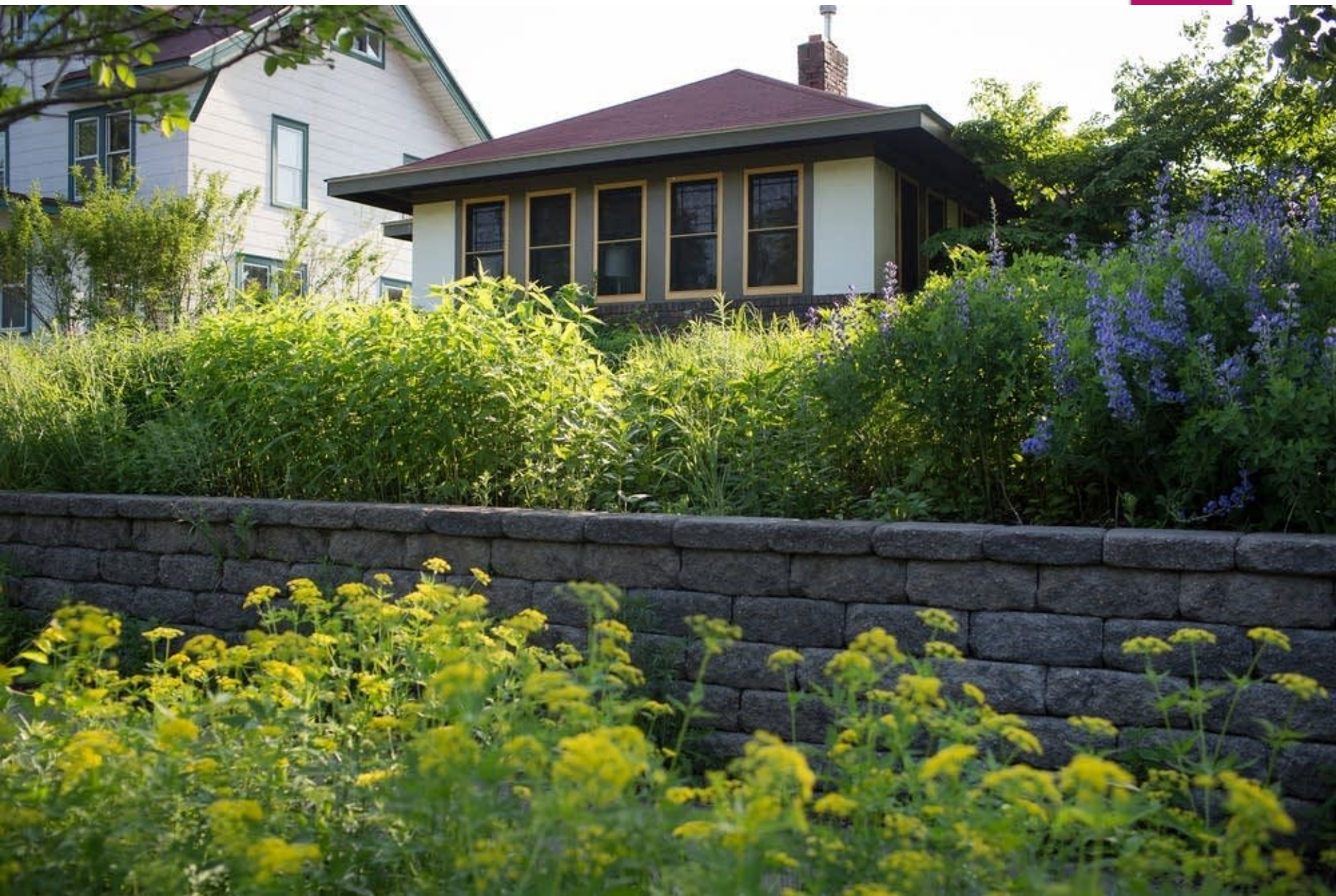




















# Plants for Butterflies

(MOSTLY NATIVES)



# Amsonia





# Asters





# Baptisia





# Black-eyed Susan (*Rudbeckia*)





# Blazing Star (*Liatris*)





# Bush Clover (*Lespedeza capitata*)





# Butterfly Weed (*Asclepias tuberosa*)





# Clover (*Dalea purpurea*)





# Compass Plant (*Silphium laciniatum*)





# Coneflower (Echinacea)





# Cup Plant (*Silphium perfoliatum*)





# Goldenrods (*Solidago*)





# Ironweed (*Vernonia*)





# Jewelweed (*Impatiens capensis*)





# Joe Pye Weed (*Eutrochium*)





# Meadow Rue (*Thalictrum*)





# Milkweeds (Asclepias)





# Missouri Primrose (*Oenothera macrocarpa*)





# Blue Mistflower (*Conoclinium coelestinum*)





# Beebalm (*Monarda*)





# New Jersey Tea (*Ceanothus americanus*)







# Passionflower Vine (*Passiflora incarnata*)





# Plantain





# Prairie Dropseed (*Sporobolus heterolepis*)



© Hoffman Nursery, Inc.



# Quinine, Feverfew (*Parthenium integrifolium*)



(C) 2010 by Charles Peirce



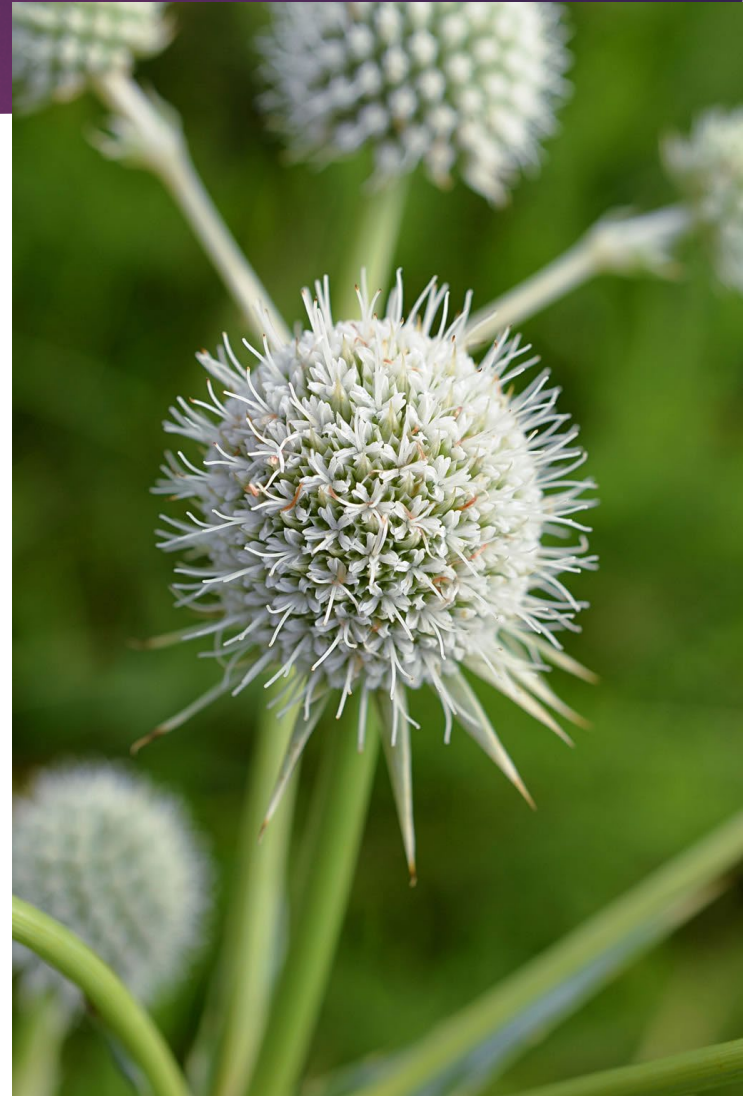
# Rose Mallow (*Hibiscus moscheutos*)







# Rattlesnake Master (*Eryngium yuccifolium*)





# Blue Sage (*Salvia azurea*)



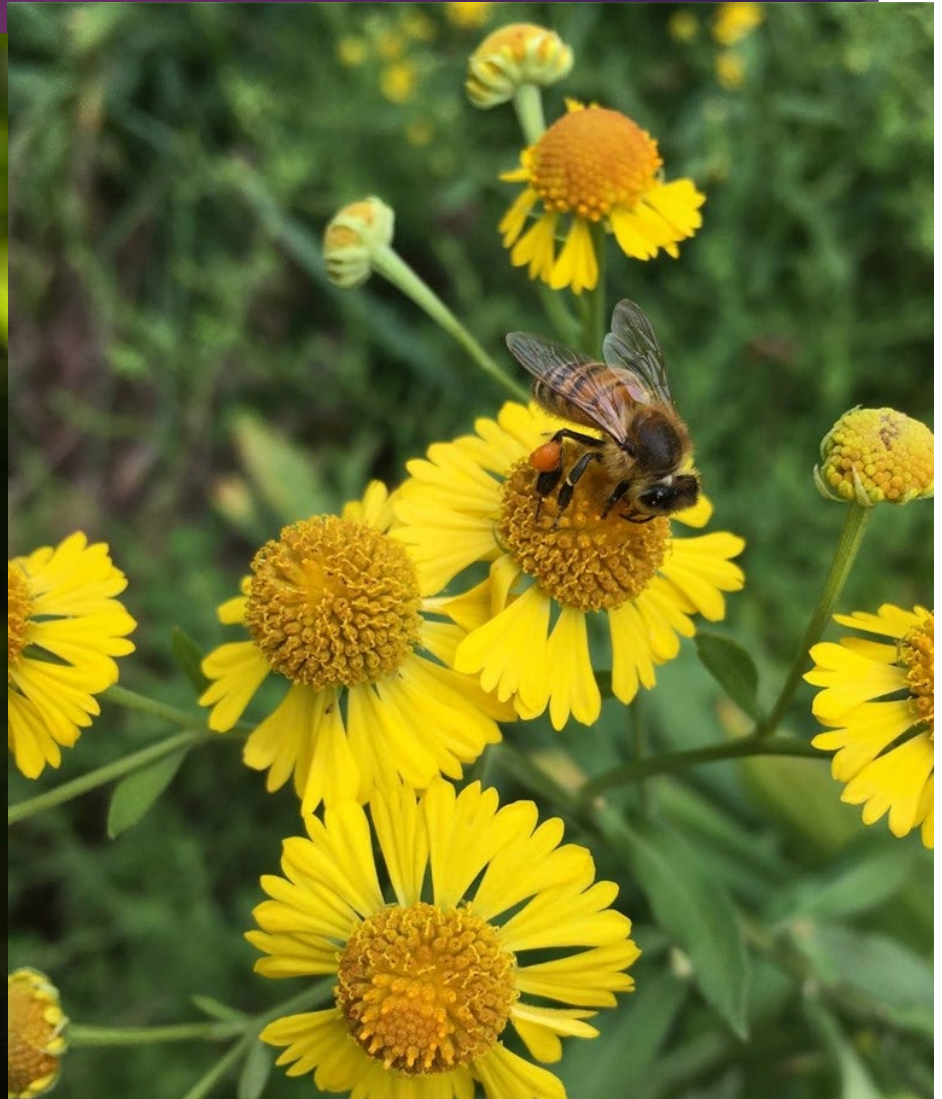


# Sunflower (*Helianthus divaricatus*)





# Sneezeweed (*Helenium*)





# Switchgrass (*Panicum virgatum*)







# Toothwort (*Cardamine concatenata*)





# Blue Vervain (*Berbena hastata*)





# Homeowner's Guidebook of Native Plants, Integrated Pest Management, and Pollution Prevention



Source Reduction Grant  
X9-96479407-0

June 30, 2009

Louisville Metro Government  
Louisville Water Company  
550 South Third Street  
Louisville, KY 40202  
(502) 569-3600

Louisville Water Guidebook to Native Plants...



# Resources

- ▶ **Gardening for Pollinators, USDA Forest service**
  - ▶ <http://www.fs.fed.us/wildflowers/pollinators/gardening.shtml>
- ▶ **Attracting Pollinators to your Garden Using Native Plants**
  - ▶ [http://www.fs.fed.us/wildflowers/pollinators/documents/AttractingPollinatorsEasternUS\\_V1.pdf](http://www.fs.fed.us/wildflowers/pollinators/documents/AttractingPollinatorsEasternUS_V1.pdf)
- ▶ **Native Plants for Your Backyard, SE US Fish and Wildlife Service**
  - ▶ <http://www.pollinator.org/Resources/nativeplantsSouthEast.pdf>
- ▶ **Gardening for Native Bees**
  - ▶ <http://www.ars.usda.gov/SP2UserFiles/Place/20800500/Gardening.pdf>
- ▶ **Establishing Pollinator Meadows from Seed**
  - ▶ <http://www.xerces.org/wp-content/uploads/2013/12/EstablishingPollinatorMeadows.pdf>
- ▶ **Butterflies and Moths of North America**
  - ▶ <https://www.butterfliesandmoths.org>





Any Questions?