

# What's Native to Me?



BRANDON GEORGE

KENTON COUNTY  
HORTICULTURE AGENT





# Agenda

Defining Native

Determining a plant's nativity

Resources to help

Plant material sources





# What is a Native Plant?

---

Plants found naturally occurring prior to European settlement, some plants have naturalized, but are not “native”

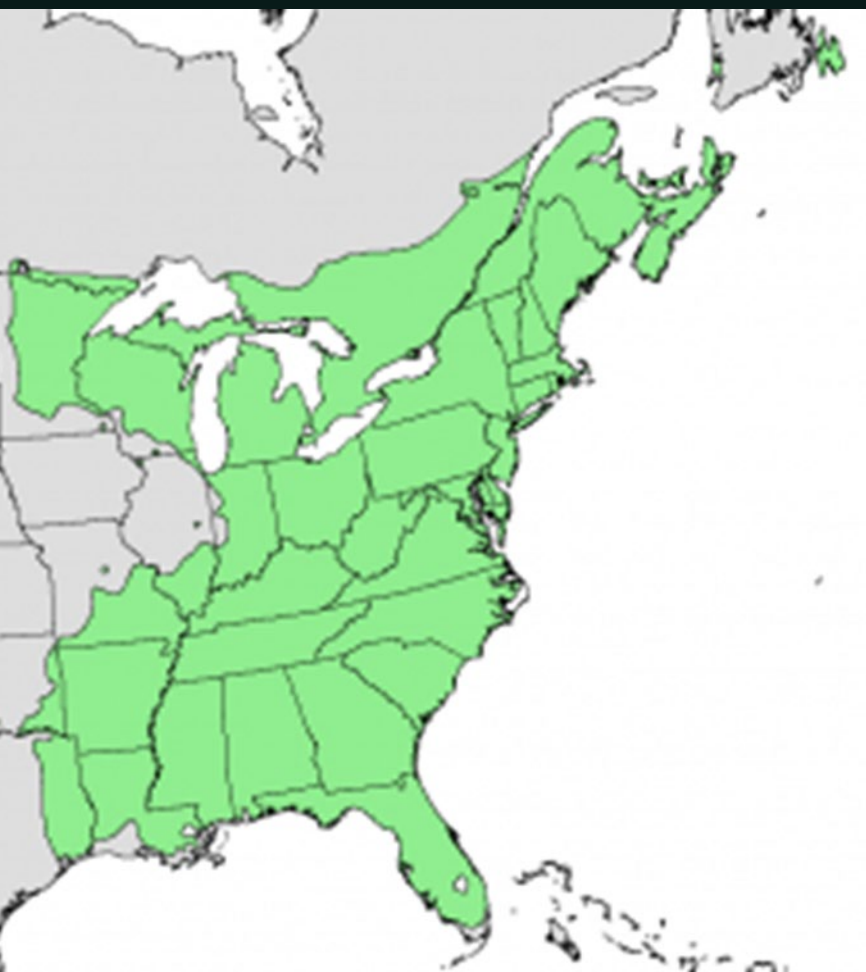
Disregard county, state, mileage and geo-political lines

Think in terms of eco-regions



# The best success with sourcing native plants

- Even within their natural range, native plant species are genetically adapted to local growing conditions. (University of Maryland Extension)
- This adaptation is typically referred to as "local provenance" or "ecotype." An ecotype is a subset of a species that possesses genetic adaptation to local growing conditions. (UME)
- Sometimes ecotypic adaptations are visible to us as variations in shape, size, or color. Other ecotypic adaptations are not readily apparent, for example, adaptations to various soil chemistries, minimum winter temperatures, and drought tolerance. (UME)



Natural distribution of *Acer rubrum*

- The US Forest Service recommends that, for optimal benefits, native plants be sourced within the same U.S. EPA Level III Ecoregion. Research has shown that ecoregion maps provide good estimates, in most cases, of the optimal ranges for the transfer of native plants. Additionally, the U.S. Forest Service recommends moving native plants no further than a half USDA Plant Hardiness Zone to the north or south.



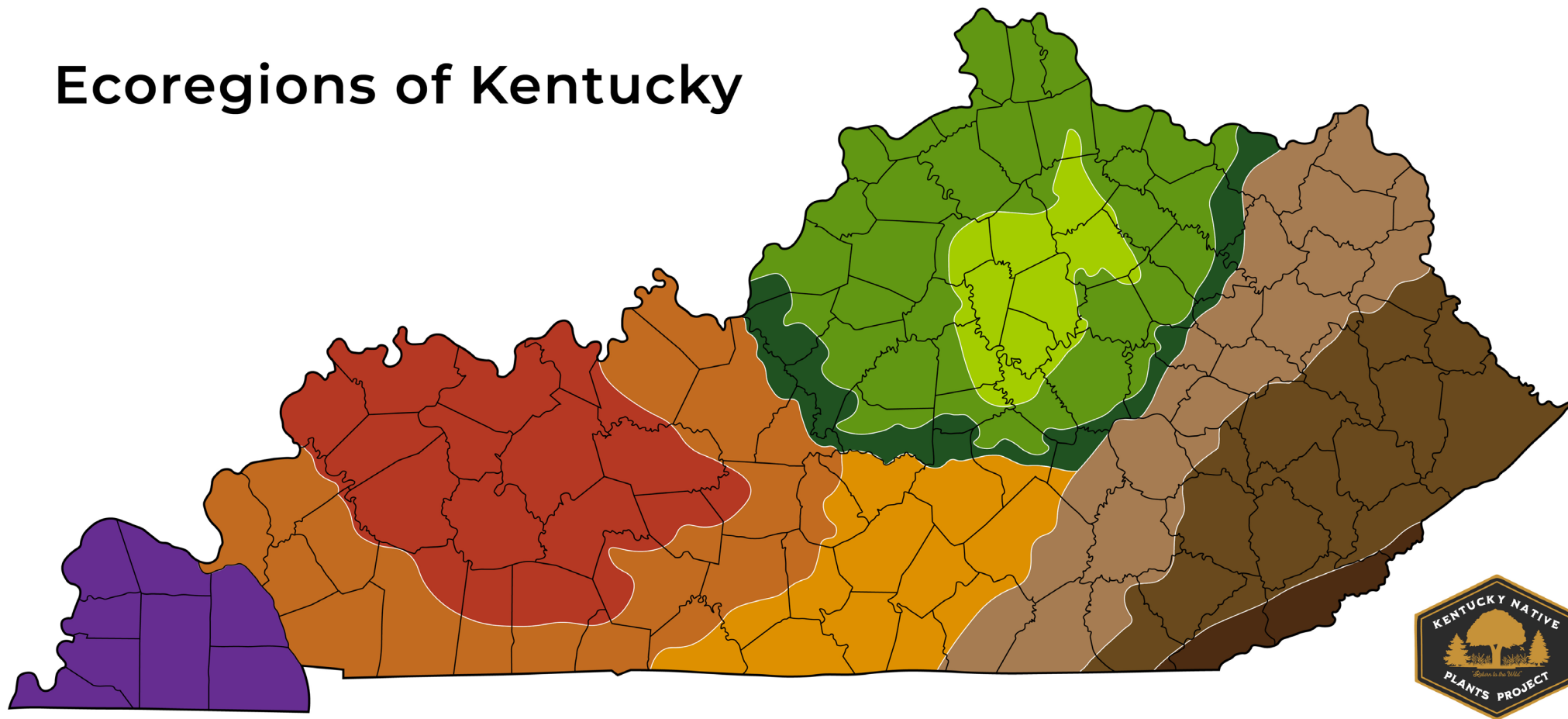
- Butterfly milkweed range maps
- Butterfly milkweed is one of our most popular native plants. The species contains three visibly distinct ecotypes, whose distributions are indicated here in red. Maps from the USDA Plants website.



# Words Matter

- A native plant can never be considered invasive, but it can be aggressive
- Not all non-native / exotic plants are “invasive” or “aggressive”
- Due to both natural environmental disturbance factors and human-based disturbance factors, many native species such as ruderal types that are adapted to disturbed environments can be difficult to manage. Plants such as Black locust, Box Elder, Eastern Red Cedar, Trumpet vine, etc.
- Importance of language affects how the general public perceives individual plants and considering what to eradicate and not eradicate




# Ecoregions of Kentucky





## 1 Bluegrass Region

-  Inner Bluegrass
-  Outer Bluegrass
-  The Knobs

## 2 Appalachian Plateaus

-  Outer Appalachians
-  Central Appalachians
-  Cumberland Mountains

## 3 Mississippian Plateau

-  Eastern M. Plateau
-  Western M. Plateau

## 4 Shawnee Hills

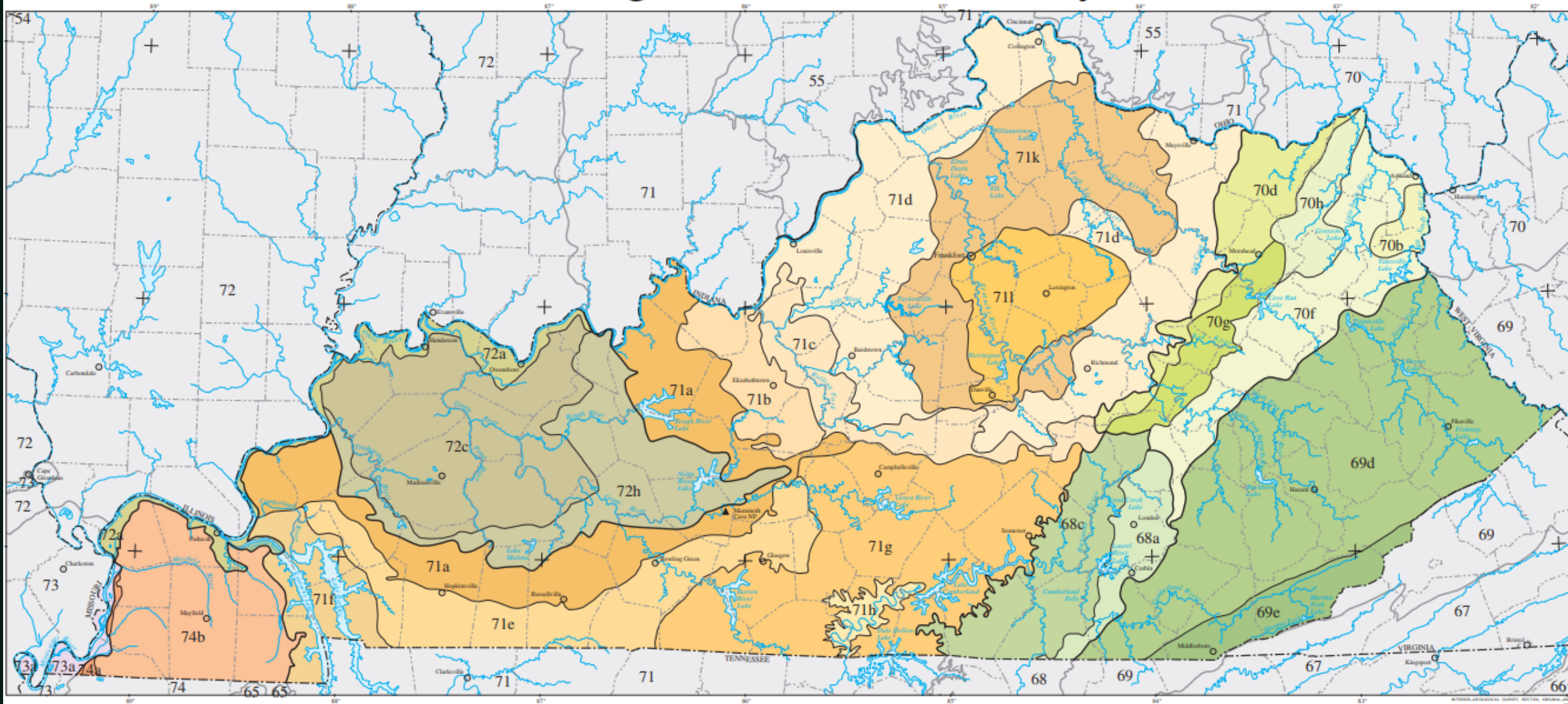
-  Shawnee Hills

## 5 Jackson Purchase

-  Jackson Purchase



# Ecoregions of Kentucky



PRINCIPAL AUTHORS: Alan J. Woods (Dynamac Corporation), James M. Omernik (USEPA), William H. Martin (Division of Natural Areas, Eastern Kentucky University), Greg J. Pond (KDEP, Division of Water, Water Quality Branch), William M. Andrews (Kentucky Geological Survey), Sam M. Call (KDEP, Division of Water, Water Quality Branch), Jeffrey A. Comstock (Indus Corporation), and David D. Taylor (USFS).

- |                              |                                   |
|------------------------------|-----------------------------------|
| 68 Southwestern Appalachians | 71 Interior Plateau               |
| 68a Cumberland Plateau       | 71a Crawford-Mammoth Cave Uplands |
| 68c Plateau Escarpment       | 71b Mitchell Plain                |
| 69 Central Appalachians      | 71c Knobs-Norman Upland           |
|                              | 71d Outer Bluegrass               |

# Determine What's Native

---

- <https://www.uky.edu/hort/sites/www.uky.edu.hort/files/pages-attachments/planttable2.PDF>
- <http://www.bonap.org/>
- <https://www.audubon.org/native-plants>
- [https://en.wikipedia.org/wiki/Cladrastis\\_kentukea#:~:text=Cladrastis%20kentukea%2C%20the%20Kentucky%20yellowwood,Indiana%20south%20to%20central%20Alabama.](https://en.wikipedia.org/wiki/Cladrastis_kentukea#:~:text=Cladrastis%20kentukea%2C%20the%20Kentucky%20yellowwood,Indiana%20south%20to%20central%20Alabama.)



# Plant Material Sources

---

- <https://www.knps.org/native-plant-suppliers-service-providers/>
- <https://www.tnnursery.net>
- <https://foodforestnursery.com/>
- <https://www.woodywarehouse.com/>
- <https://www.woodywarehouse.com/>
- <https://www.ironweednursery.com/Woody-Plants-s/103.htm>
- <https://eec.ky.gov/Natural-Resources/Forestry/state-nuseries-and-tree-seedlings/Pages/default.aspx>
- <https://www.thetreecenter.com/>
- <https://greatplainsnursery.com/product-category/shrubs/>
- <https://www.possibilityplace.com/>
- Bower Farm- Cincinnati Zoo native plant sale Fall, Spring

# Sources

---

- [https://getblooming.com/cdn/shop/products/cladrastis-kentukea\\_1600x.jpg?v=1618847174](https://getblooming.com/cdn/shop/products/cladrastis-kentukea_1600x.jpg?v=1618847174)
- <https://plants.ces.ncsu.edu/plants/amelanchier/>
- <https://www.gettingmoreontheground.com/wp-content/uploads/2019/09/osagefruit.jpg>
- <https://www.epa.gov/eco-research/level-iii-and-iv-ecoregions-state>
- <https://extension.umd.edu/resource/what-native-plant>