




# BY THE LIGHT OF THE SILVERY MOON

Lori Bowling  
Boyd County Extension  
Agent for Horticulture

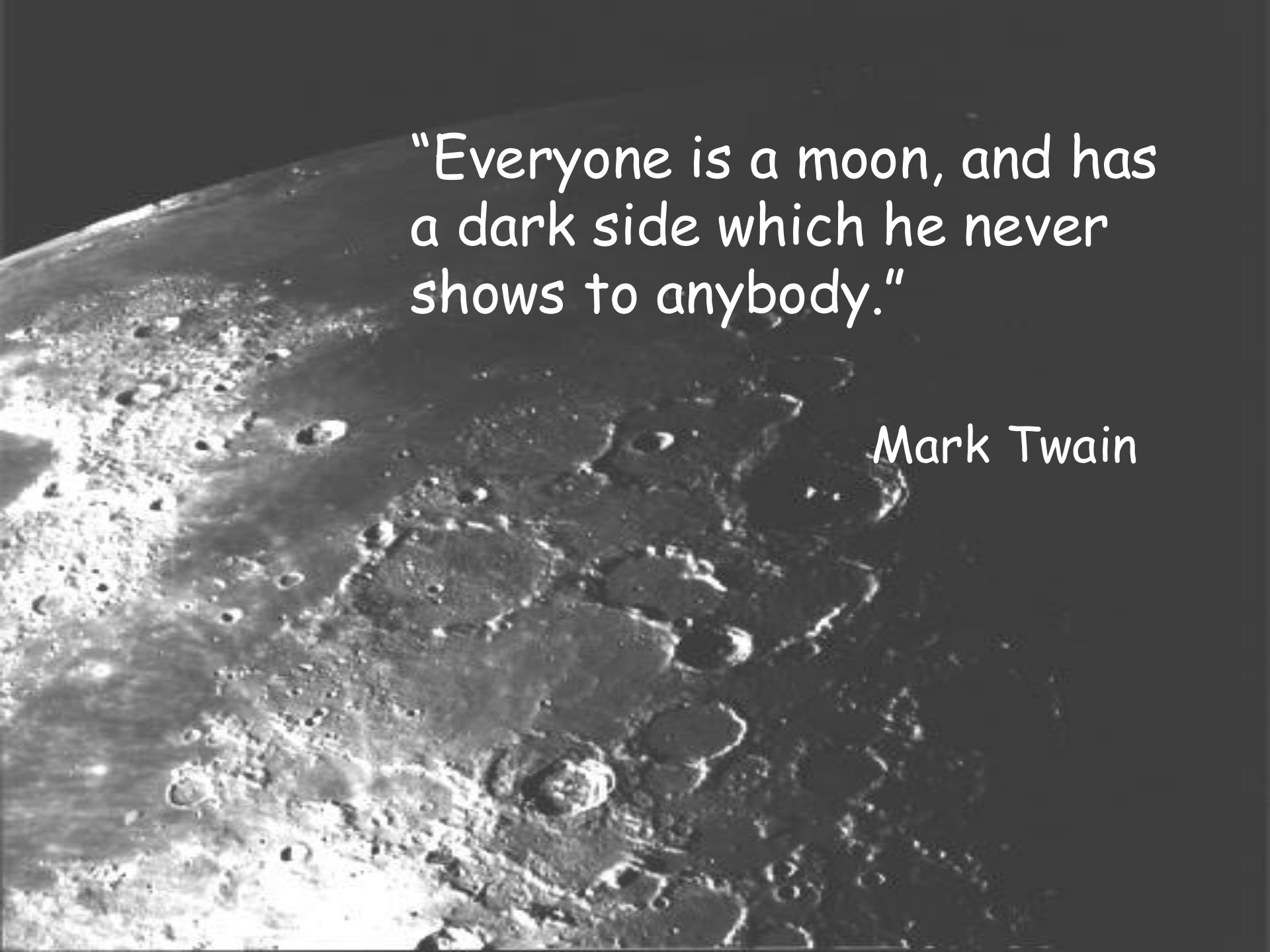


"The moon is the accomplice of all things related to the heart."

Walter Mercado

"The moon looks upon many night flowers; the night flowers see but one moon."

Jean Ingelow

A black and white photograph of the Moon's surface, showing numerous craters and a dark, shadowed region. The image is used as a background for the text.

"Everyone is a moon, and has  
a dark side which he never  
shows to anybody."

Mark Twain



# Creating a Moon Garden







# What is a Moon Garden

Moon gardening is creating a garden that will come to life at night. By using fragrant, night blooming flower and plants that attract nocturnal pollinators you can create a garden that will “glow” and provide a sensory experience with their scents.







# Why Plant a Moon Garden?

- Not enough hours in the "day"
- Experience your garden through different senses
- See things that go bump in the night

Planting Location  
Unrestricted Moonlight  
with plenty of sun during  
the daytime hours.  
Must choose a site with  
good drainage as well.





# Garden Design

\*Spend time in your garden to determine what areas you would be more likely to use during those evening and night hours.

\*You may even consider near open windows for evening enjoyment from indoors

\*For the first year you may just start with a border along a path with annuals



# Selecting Your Plants

- \*The more amount white plants the more "glow" you will have in your garden
- \*You can use white blooming plants, with some that bloom at night and close during the day. You can also use plants with silver or white variegated foliage
- \*Be sure to locate your garden where the moonlight will shine directly on your plants





# Lighting

You are choosing plants that will give off a glow in the evening/night hours but adding soft lighting can create ambiance to your evening setting as well.

\*Choose strings of fairy lights or patio lights that give off a soft glow. Lanterns are also a good choice.



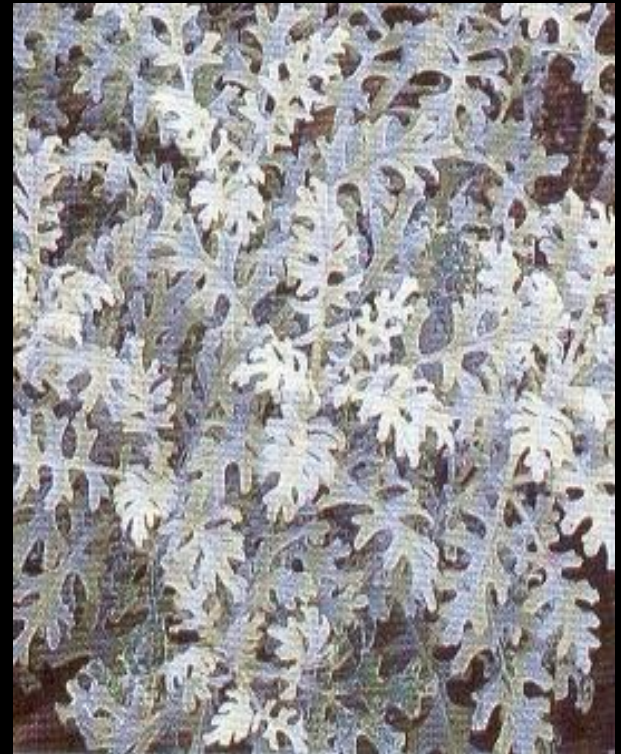
A photograph of a garden filled with white cosmos flowers and green foliage. The text "Moon Garden Musts" is overlaid on the left side of the image in a white, handwritten-style font. The background shows a dense thicket of green trees and bushes, suggesting a lush garden setting. The lighting is bright, highlighting the white petals and green leaves.

# Moon Garden Musts



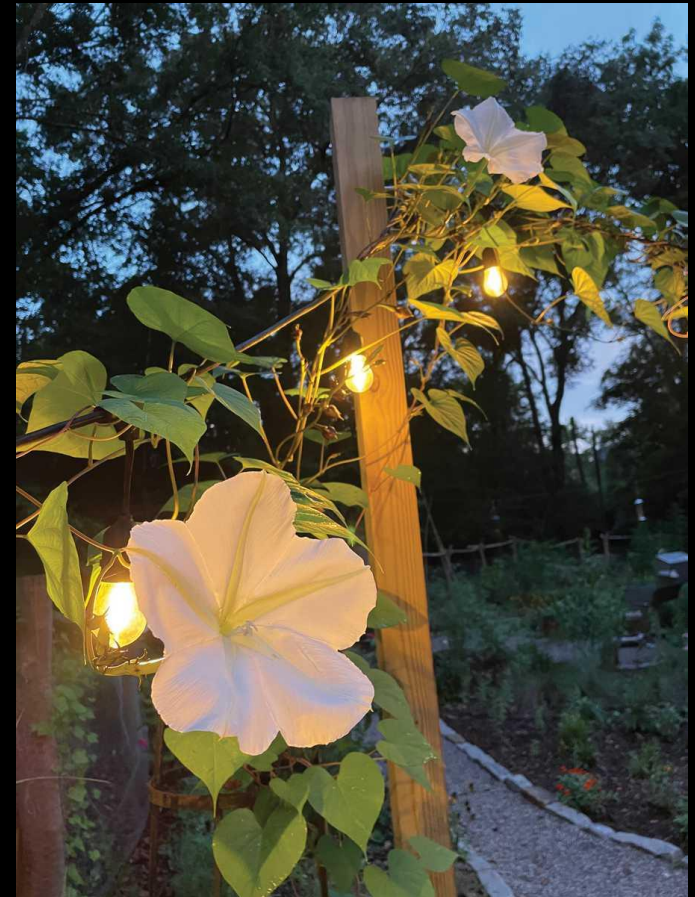
# Chosen because:

- Silvery, blue-gray or iridescent foliage
- White or pale blooms which reflect the illumination of the moon
- Evening fragrance awakens senses (older varieties)



# Ipomoea alba 'Giant White', Moonflower Vine

- Morning glory's nocturnal counterpart
- Vine can reach 10 feet or more
- Fragrance is a pure delight
- Attracts moths and bats





# Oenothera biennis, Evening Primrose

- Plant in full sun
- Night flowering biennial
- Opens in evening and closes by noon
- Takes 2 years to complete its life cycle
- Lemon-scented blooms



# Mirabilis jalapa

## Four O'Clocks

- Remain open from dusk till dawn
- Tender perennial, often used as annual
- Plants grow 2'-3' tall with the same width

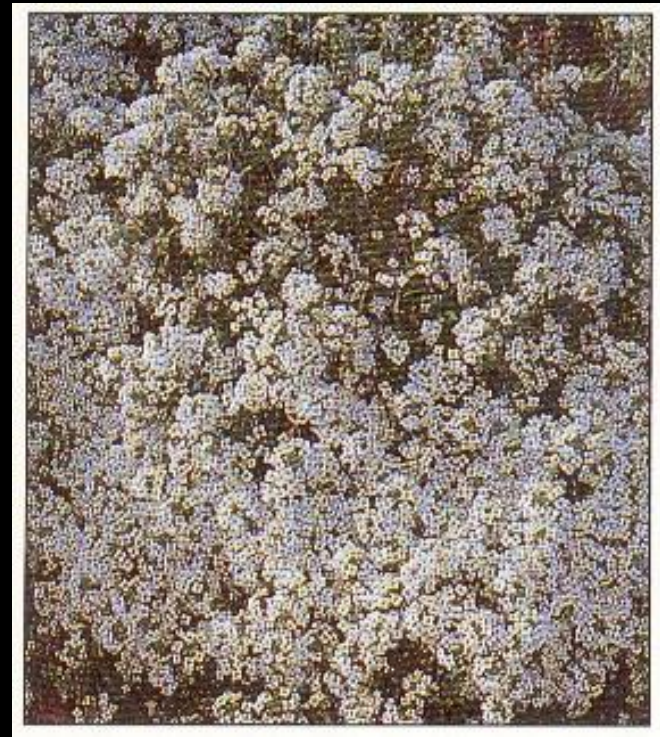




# Lobularia maritima 'Carpet of Snow'

## Sweet alyssum

- Performs best during cool weather
- 6" x 12"
- Mass of thimble-shaped blooms



# Nicotiana alata 'Domino White' or 'Fragrant Cloud', Flowering Tobacco

- Flowers open at twilight
- Disease problems similar to smoking tobacco



# Brugmansia x candida, Angel's Trumpet

- Annual, tropic
- Can be pruned into tree form
- Exceptional in bloom





# Cestrum nocturnum

## Night-Blooming Jasmine

- Has a strong sweet fragrance
- Blooms at night
- Comes to life at night
- Will need protection in winter



# Polianthes tuberosa

## Tuberose

- Long lasting sweet fragrance comparable to gardenia
- Tender perennial bulb that will need protection in winter or dug up and stored





# Phlox paniculata Luminary® 'Backlight' *Tall* *Garden Phlox*

- Large heads of white, fragrant blooms
- Disease resistant
- Blooms summer thru fall



# Iberis sempervirens, Candytuft

- Evergreen mounds of rich foliage
- Carpet of white blooms





# Stachys byzantina

## 'Silver Carpet', Lamb's-Ears

- Neat and compact
- Listed as non-flowering
- Better growth in a low fertility soil



# Perovskia atriplicifolia, Russian Sage

- Grown for its gray aromatic foliage
- Cut back to within several inches of the ground each spring



# Artemisia stelleriana

## 'Silver Bullet'

- Finely cut silver foliage
- Rapid grower
- Heat tolerant, drought tolerant





# Artemisia schmidtiana

## 'Silvermound'

- Forms mounds of ferny silver foliage
- Clumps tend to open in center
- Prevent from flowering for best form



# Senecio cineraria, Dusty Miller

- Mounded habit
- Most effective when planted in mass



# Cosmos 'Sonata White'

- Large blooms
- 40" stems
- Reseeds
- Tolerates dry soil





# *Datura innoxia*

- Poisonous!
- Spiny Fruit
- Spectacular  
6" Blooms



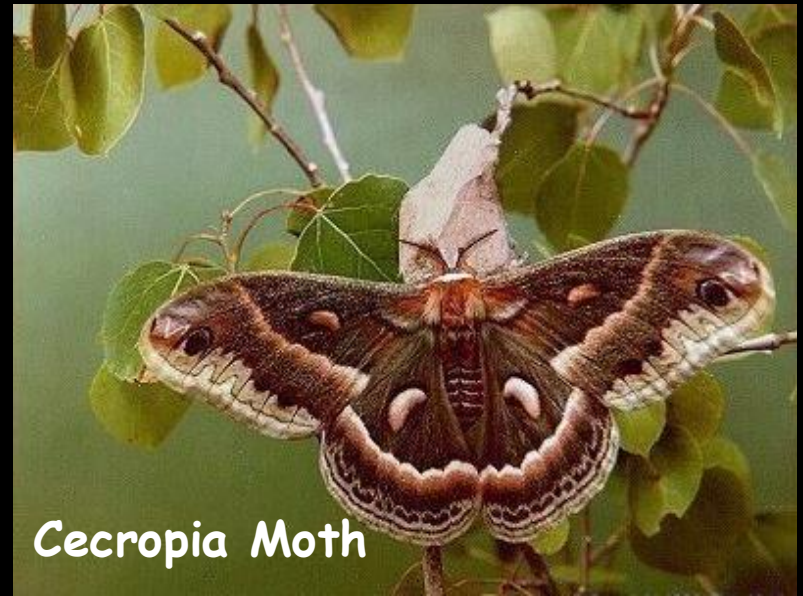
...Things that go  
bump in the  
night







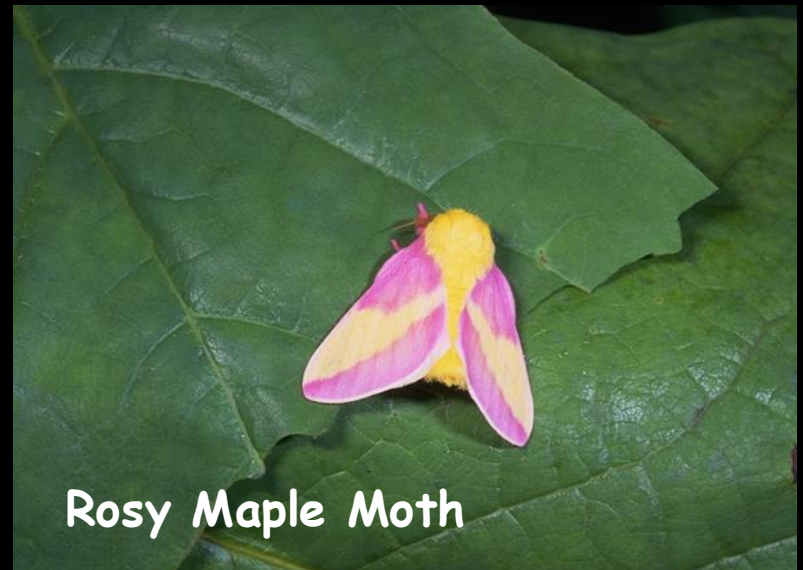
Io Moth



Cecropia Moth



Luna Moth



Rosy Maple Moth



Royal Walnut Moth



Sphinx Moth

A moonlight garden is pretty by day, but its true enjoyment is reserved for the evening hours, a reward at the end of the day.





Boyd County Cooperative Extension Service

2420 Center Street

Catlettsburg, Ky 41129

Telephone: 606-739-5184

[lori.bowling@uky.edu](mailto:lori.bowling@uky.edu)